

# Your Partner for a successful integration of Time Clocks with Workday **Time Tracking!**



Global | Trusted | Flexible | Engaged

#YourTimeClockPartner



# Who Are We?

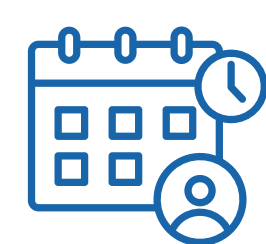
ZKTeco Workforce Management! As a proud Workday Certified Partner, we are a leading provider of innovative workforce data collection solutions, specializing in employee time clocks with seamless and certified integration with Workday Time Tracking. ZKTeco Workforce Management has a strong global presence, serving businesses across various industries with a commitment to excellence in design, manufacturing, implementation, and customer service. Our partnership with Workday ensures seamless integration, providing a cohesive and efficient workflow.

## What Problems Do We Solve for the **Modern Workforce?**

In today's dynamic workplace, managing time and attendance can be a challenge. Here's how we, as a Workday Certified Partner, address these issues:

### Employee Attendance Data

- Check-IN/OUT
- Break-IN/OUT
- Meal-IN/OUT
- Department Transfer



### Multi-Level Time/ Labor Tracking

- Position
- Cost Center
- Job Profiles
- Project Numbers
- Custom Worktags
- Tips



### Employee/Manager Self-Service:

- View Accrual Balance
- View Schedule
- View Points
- Time-off Request
- Time-off Request Status
- Direct Manager – Hours Entry



### Compliance

- Meal/Break Lockouts
- Schedule & Certificate Lockouts
- Multi-level Attestations and Consents





# What Products Do We Offer?

## Ultima 10

Display	10 inches
Biometric Option	Fingerprint, Face, Palm
Card Reader Option	Prox, RFID, Smart Card, Apple Wallet, QR Code
Magnetic and Barcode	Yes
Camera	2MP HD Camera
Connectivity	Ethernet, Dual band Wi-Fi, 4G
Power	Battery Backup, PoE+
Operating System	Android



## Ultima 7

Display	7 inches
Biometric Option	Fingerprint, Face, Palm
Card Reader Option	Prox, RFID, Smart Card, Apple Wallet, QR Code
Magnetic and Barcode	Yes
Camera	2MP HD Camera
Connectivity	Ethernet, Dual band Wi-Fi
Power	Battery Backup, PoE+
Operating System	Android



## Ultima 7P

Display	7 inches
Biometric Option	Fingerprint, Face, Palm
Card Reader Option	Prox, RFID, Smart Card, Apple Wallet, QR Code
Magnetic and Barcode	No
Camera	2MP HD Camera
Connectivity	Ethernet, Dual band Wi-Fi, 4G
Power	Battery Backup, PoE+
IP66	Water and dust resistance



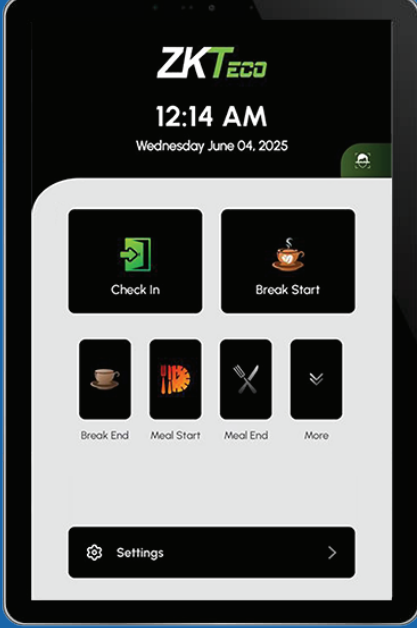


# Punch Your Way Anytime, Anywhere

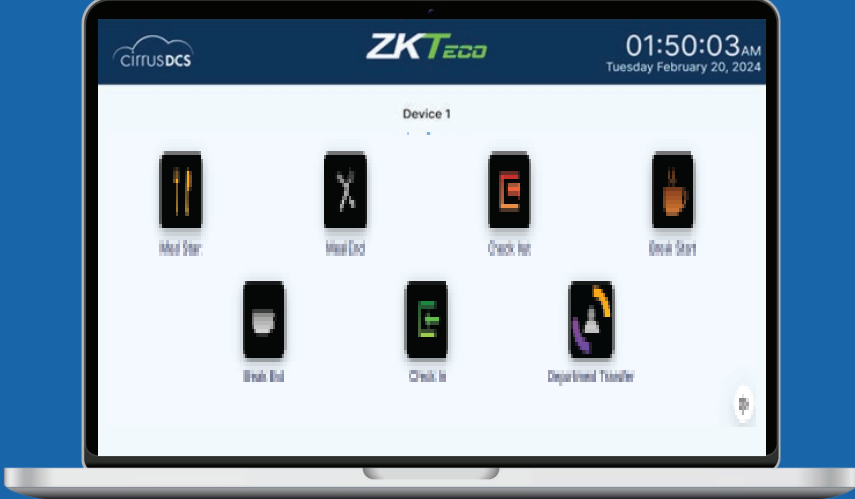
Today’s workforce needs flexibility. With our unified time collection solutions, employees can punch the way that works best for them




Cirrus Mobile



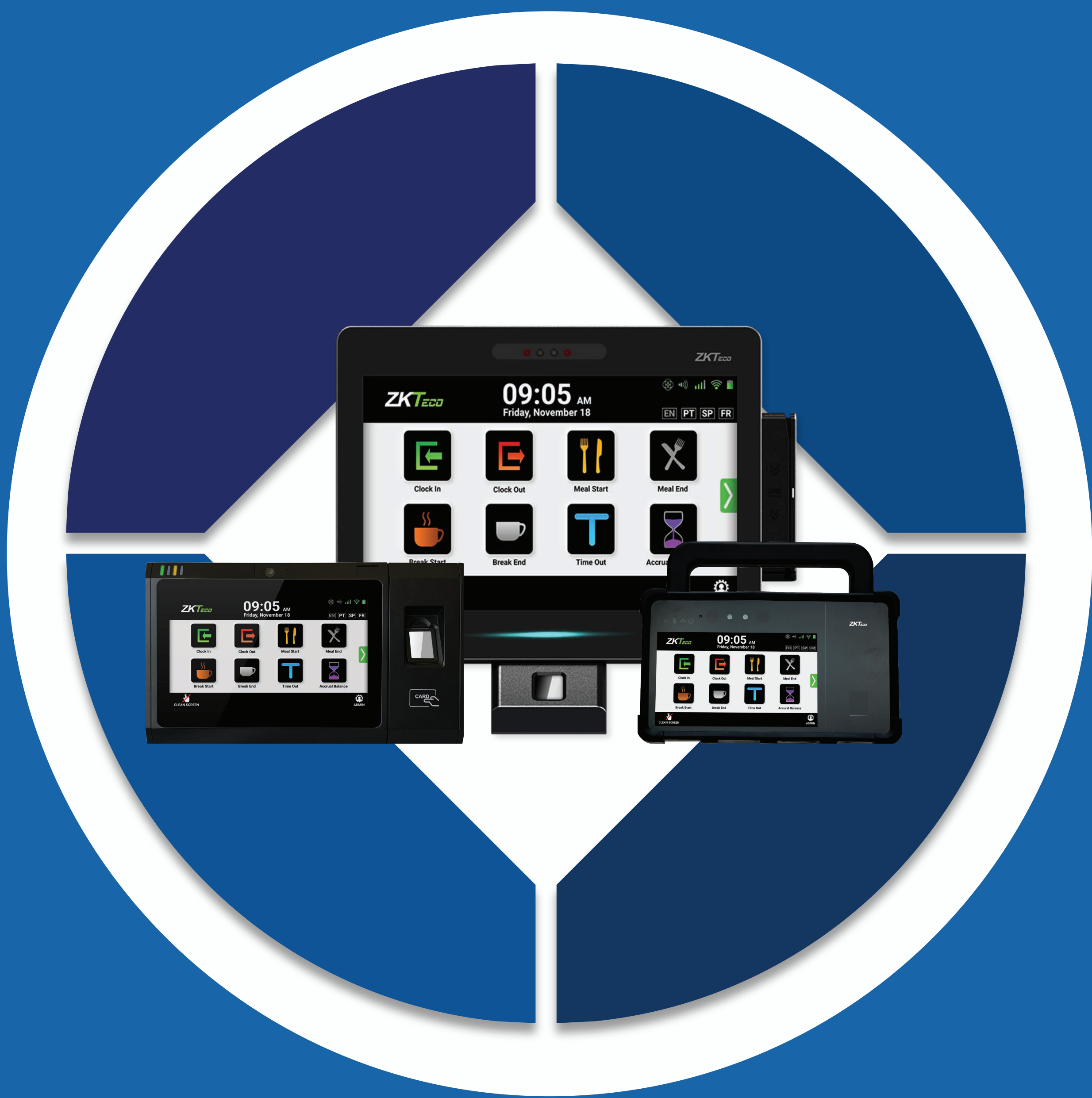
Cirrus Kiosk



Cirrus Web



Cirrus Telephone



## One Enrollment Multiple Punch Points Enterprise Confidence

ZKTeco WFM delivers the industry’s most advanced Facial Biometric Technology, powered by enterprise-grade algorithms to ensure speed, accuracy, security, flexibility, and compliance, providing a consistent workforce experience.





Cirrus Mobile



Cirrus Kiosk



Time Clock



# Efficient, **Accurate**, and **Automated** Data Collection Service for **Workday Time Tracking**

Specifically built for and integrated with Workday Time Tracking, Cirrus DCS cloud-based software automates and validates workforce data collected from a variety of time clocks designed to suit the unique needs of any company and industry.



## Features:

**Scalable,  
Reliable Architecture**

**Enterprise-  
Level**

**Notifications  
& Alerts**

**At-a-Glance  
Dashboard**

**Remote  
Management**

**Monitoring**



# Streamlined Implementation Process

From Training through Testing and Go Live, ZKTeco is with you Every Step of The Way



## Why Choose ZKTeco Workforce Management?

Choosing ZKTeco means partnering with a leader in time clock solutions, trusted by Workday.



### Rapid ROI

- » Workday-certified solution
- » Cloud-based, no infrastructure to manage
- » Lower deployment costs with streamlined implementation process
- » Cost-effective hardware

### Low operating cost

- » Lifetime hardware warranty
- » 50% Discount on hardware trade-ins
- » Software upgrades & bug fixes
- » Technical support





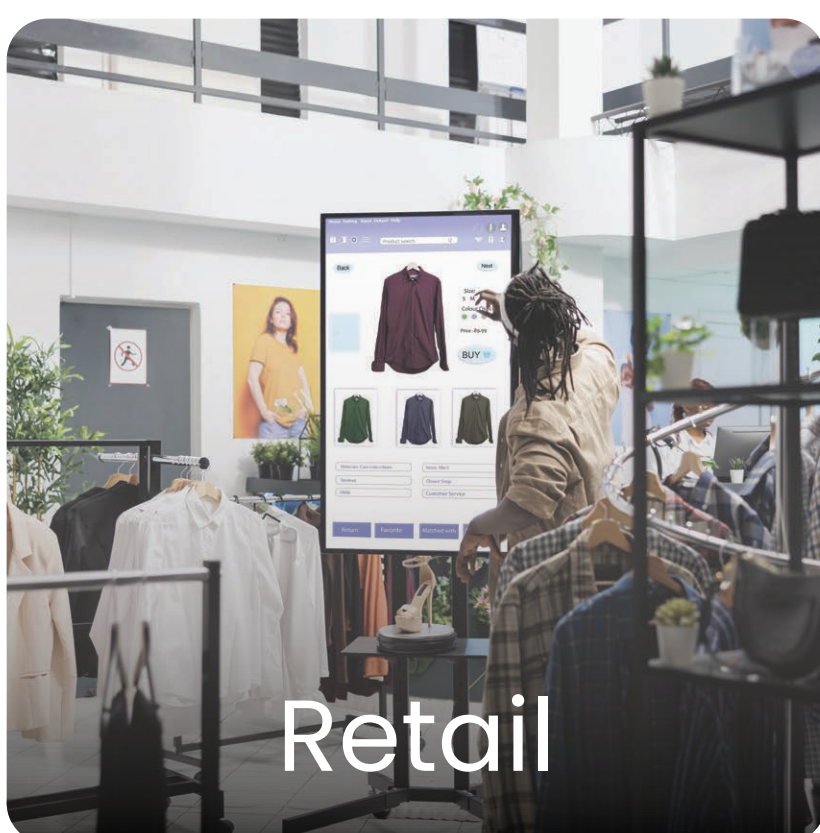
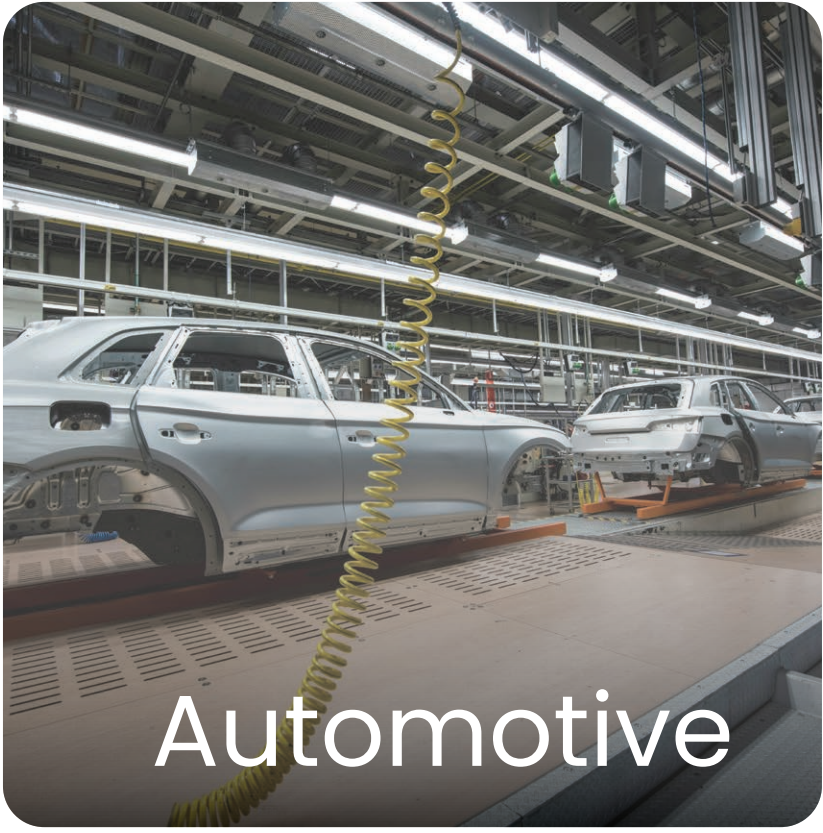
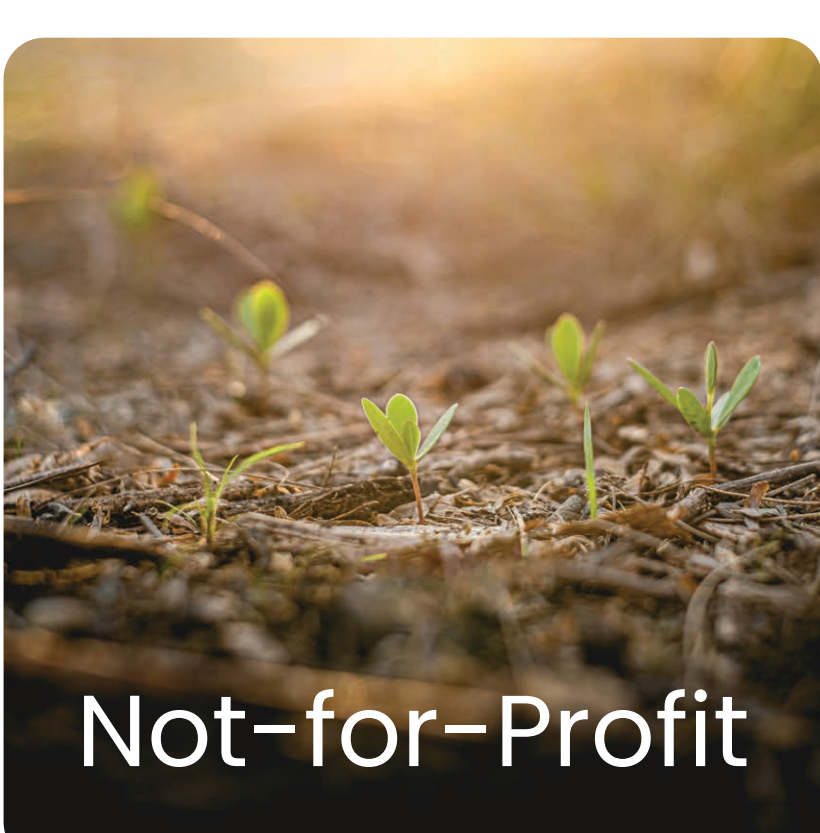
# What Are Our Credentials and Industry Impact?

As a top Workday Certified Partner, we specialize in time and attendance management solutions. Our credentials include seamless integration with Workday’s HCM and payroll systems and a proven track record in various industries.



<div>28</div> <div>Global Offices</div>	<div>10K</div> <div>Global Sites</div>	<div>250+</div> <div>Workday Customers</div>
<div>14K+</div> <div>Clocks Hosted</div>	<div>1M+</div> <div>Active Employees</div>	<div>2M+</div> <div>Employee Punches Daily</div>

## Industries We Serve





Discover how ZKTeco Workforce Management can transform your workforce management processes with seamless Workday integration. Contact us today to learn more and schedule a demo.

## Contact us:

### ZKTeco Workforce Management

4515 George Rd, Suite 370,  
Tampa, FL 33634, USA

200 Centennial Avenue, Suite 211,  
Piscataway, NJ 08854, USA

### European Service Centers

17, Ace Business Park  
Birmingham, B33 0LD United Kingdom

Carretera de Fuencarral 44, Edificio 1  
Planta 2, 28108Alcobendas, Madrid. Spain

 (732) 412-6007

 [sales@zktecowfm.com](mailto:sales@zktecowfm.com)

 [zktecowfm.com](http://zktecowfm.com)



 [Click here to visit our website](http://zktecowfm.com)



 [Click here to follow us on LinkedIn](#)